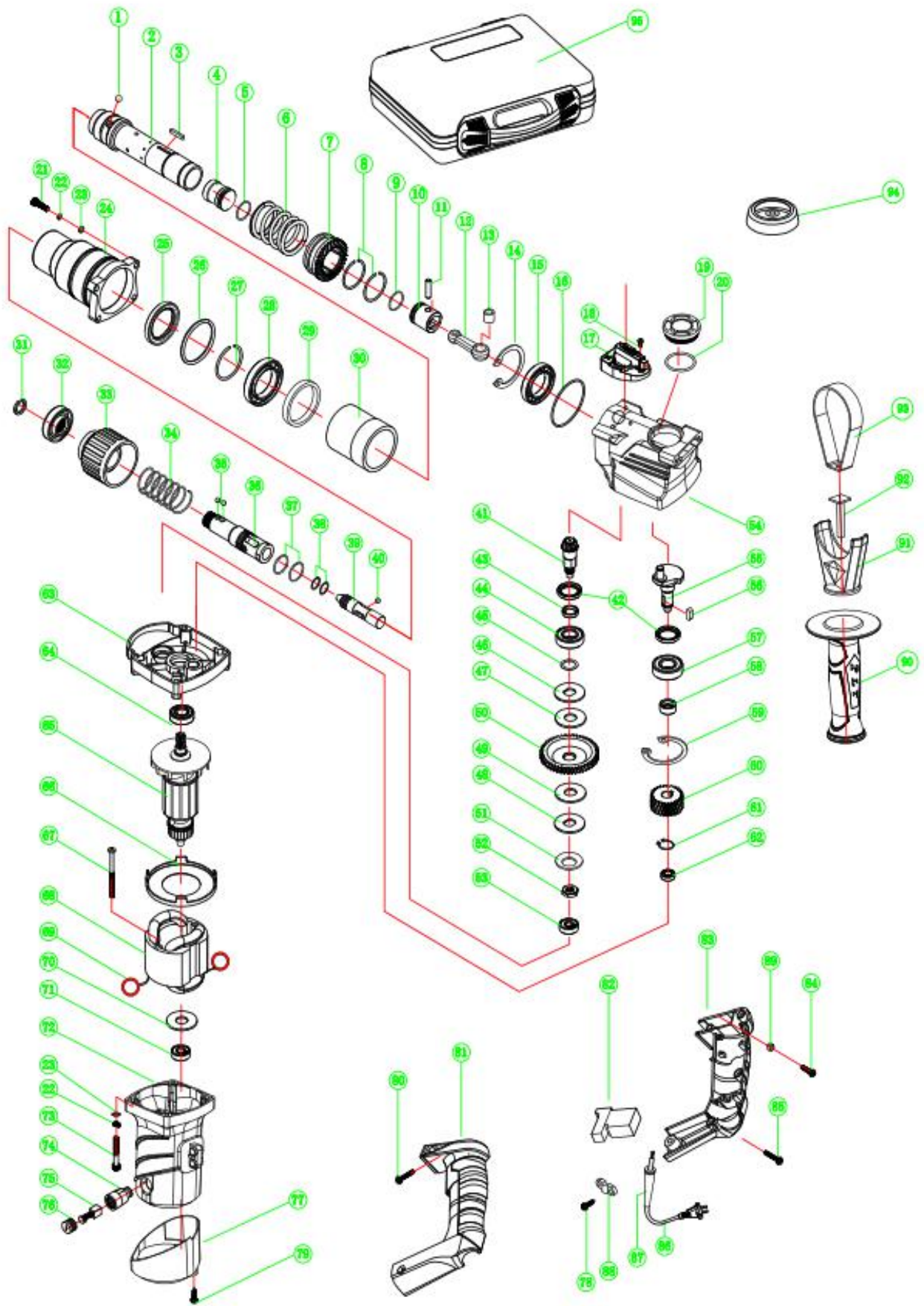


02-28 双用电锤爆炸图



ROTARY HAMMER spare parts list

No.	Part Name	QTY	No.	Part Name	QTY
1	∅ 8 Steel Ball	3	48	Square Washer	1
2	Cylinder	1	49	Friction plate	1
3	Flat key	2	50	Flat gear (gear 2)	1
4	Rammer	1	51	Disc spring washer	1
5	O Ring (FKM)	1	52	Nut	1
6	Brake spring	1	53	627 Bearing	1
7	Gear (gear 4)	1	54	Reducer box	1
8	Roundwire snap rings for shafts	1	55	Eccentric Shaft	1
9	O Ring (FKM)	1	56	Flat key	1
10	Piston	1	57	6202 Bearing	1
11	Piston Pin 6*24.5	1	58	Range ring	1
12	Connecting rod	1	59	Spring	1
13	Neeble bearing HK0810	1	60	Gear (gear 1)	1
14	∅ 47 Elastic spring for hole	1	61	Spring	1
15	Oil Retaining Bearing	1	62	698 Bearing	1
16	O Ring of Front Housing	1	63	Middle cover	1
17	Toggle button assembly	1	64	6000 Bearing	1
18	Philip's head screw	3	65	Armature	1
19	Oil seal cover	1	66	Wind director	1
20	O Ring	1	67	Philip's head screw	2
21	Inside hex bolts	4	68	Field Coil	1
22	Spring Washer	4	69	Ring	2
23	Flat washer	4	70	Anti-dust Washer	1
24	Staight barrel	1	71	608 Bearing	1
25	Framework oil seal	1	72	Motor Housing	1
26	Flat gasket	1	73	Inside hex Screw	4
27	Spring	1	74	Brush holder	2
28	Bearing 6907	1	75	Carbon brush	2
29	Rubber ring	1	76	Brush holder cover	2
30	Range Sleeve	1	77	Rear Cover	1
31	Roundwire snap rings for shafts	1	78	Philip's head screw	2
32	Chuck head	1	79	Philip's head screw	2
33	Steel Ball Carrier	1	80	Philip's head screw	4
34	Slide bushing spring	1	81	Switch handle (left)	1
35	∅ 7 Steel Ball	4	82	Switch	1
36	rotary sleeve	1	83	Switch handle (right)	1
37	O Ring	2	84	Philip's head screw	1
38	O Ring	2	85	Philip's head screw	1
39	Shock sub	1	86	Cabel	1
40	∅ 7 Steel Ball	3	87	Sheath	1
41	Bevel Gear Shaft (gear 3)	1	88	Cord Clamp	1
42	Framework oil seal	2	89	Side handle	1
43	Range ring	1	90	Bracket	1
44	6002 Bearing	1	91	Square head bolt	1
45	Washer	1	92	Side Handle Hoop	1
46	Square Washer	1	93	Anti-dust Cap	1
47	Friction plate	1	94	Plastic Box	1